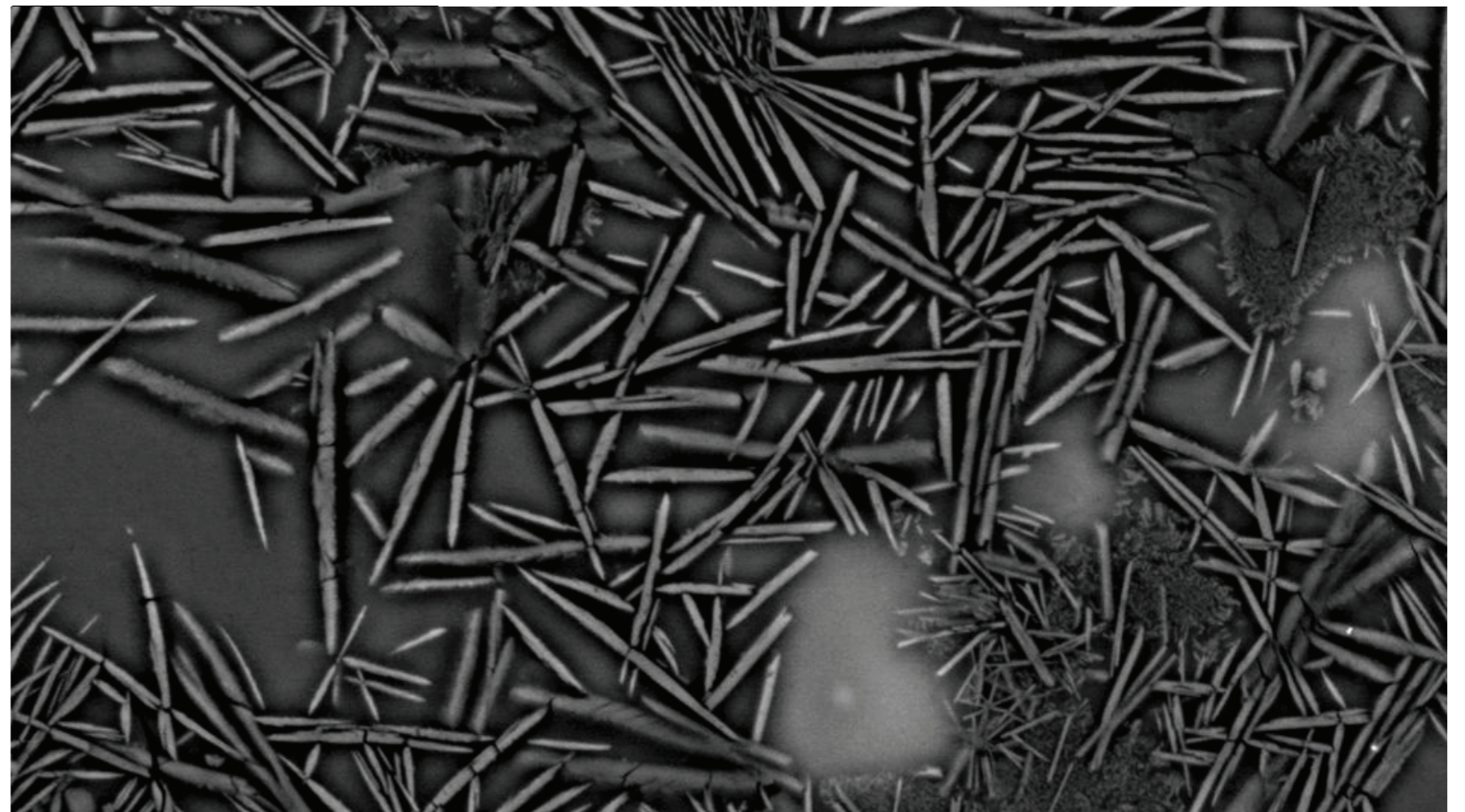


Oued Awilits 001. Photo: Ludovic Ferrière, NHM, Vienna



Donwilhelmsite needles, 5-15 μm in length. BSE-image: Ansgar Greshake



Crustal thickness and topography

Based on Garrick-Bethell et al. (2010, Science)

The lunar crustal thickness corresponds roughly to topography

